

Cashmaster[®] **connect**

quick-start guide



Document information

Date: 30 October 2017

Document ID: 10584A

Contact

Cashmaster International Ltd.

Dunnottar House

Unit 6 St David's Drive

St David's Business Park

Dalgety Bay, Fife KY11 9PF

Scotland, United Kingdom

cashmaster.com

Copyright

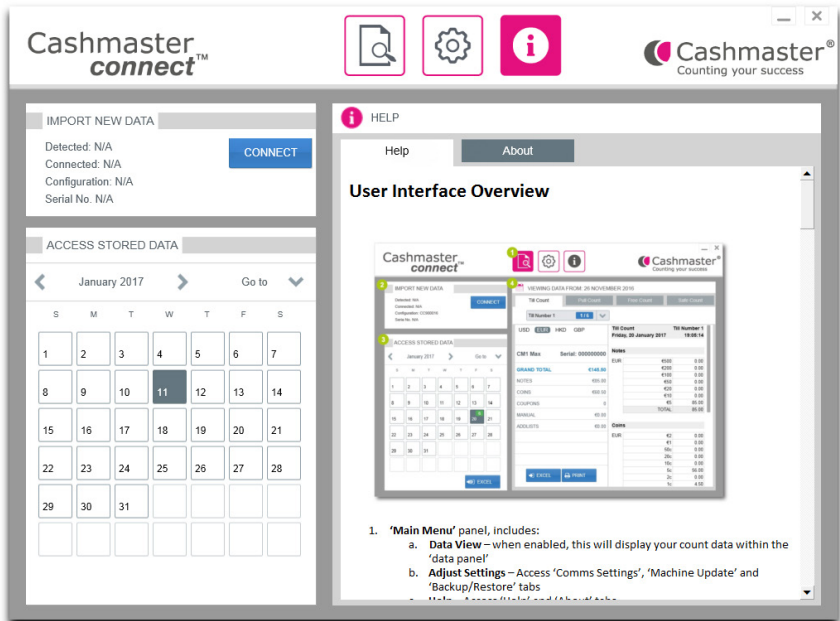
Copyright © 2017 Cashmaster International Ltd - All Rights Reserved.

Other product and company names may be trademarks or registered trademarks of other companies, and are the property of their owners. They are used only for explanation, without intent to infringe.

Intended purpose

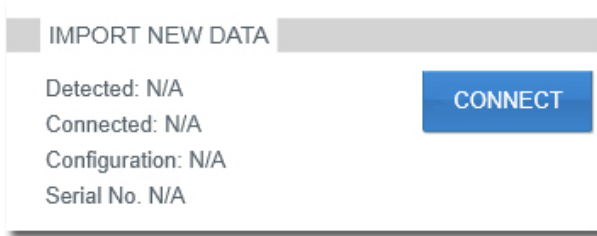
This document is provided for Cashmaster Connect users and provides an overview of their Cashmaster Connect product.

- 1 Connect your Cashmaster to your PC with a USB cable.
- 2 Power ON your Cashmaster.
- 3 Start Cashmaster Connect from the desktop icon or start menu.
The application will briefly show the splash screen before entering the HELP view. Please review the HELP information to familiarise yourself with the various features of Cashmaster Connect.




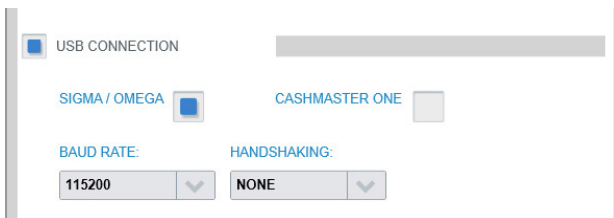
4.a For Cashmaster One series products:

To connect the Cashmaster One counter to the application, click/tap the 'CONNECT' button in the IMPORT NEW DATA panel.



4.b For legacy Cashmaster Sigma or Omega series products:

- Click the 'Settings' icon to enter 'Comms Settings' panel: 
- Under 'USB CONNECTION', select 'Sigma / Omega' – no other changes are required:

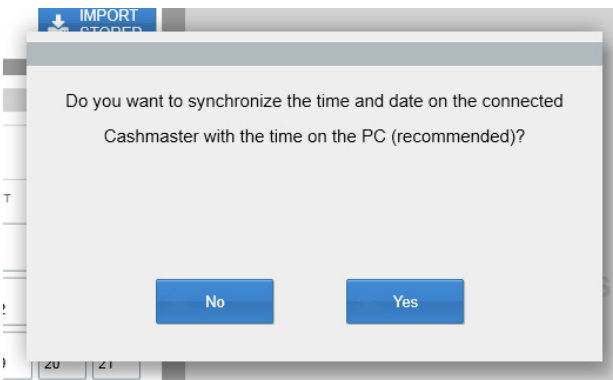


- Click the 'CONNECT' button in the IMPORT NEW DATA panel.

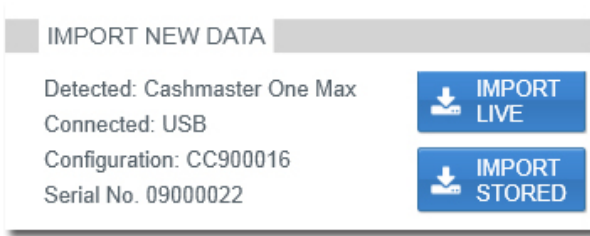
- 5** You will be prompted to set the application's default configuration file to that of your Cashmaster.
Choose 'Yes' unless you have several Cashmaster products with different configuration files, in which case select 'No'.



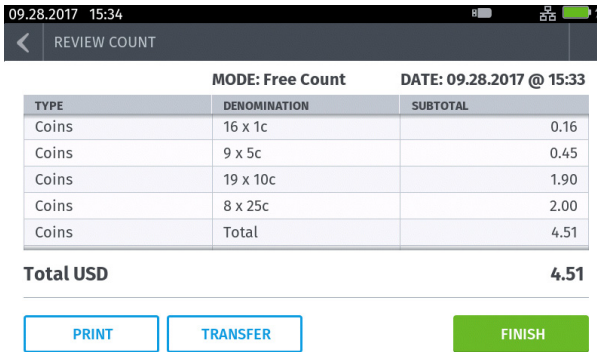
- 6** Next, you will be prompted to set your Cashmaster's time and date to that of your PC. This is recommended – choose 'Yes'.



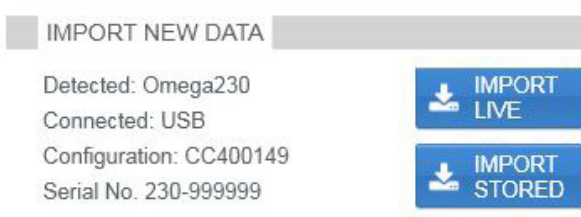
- 7 The IMPORT NEW DATA panel will now display details about your connected Cashmaster counter.



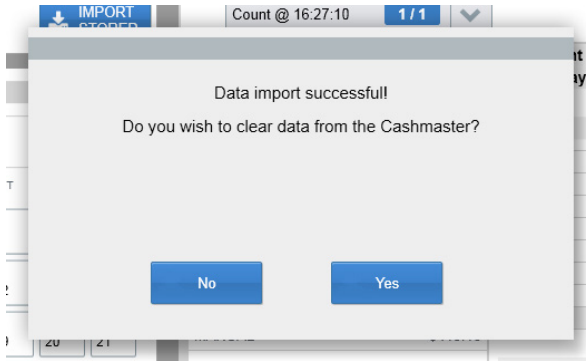
- 8 Perform a cash count with your Cashmaster counter. When you are ready to transfer the count data to Cashmaster Connect, go to the 'Review Count' screen on your Cashmaster One counter and tap the blue Transfer button:



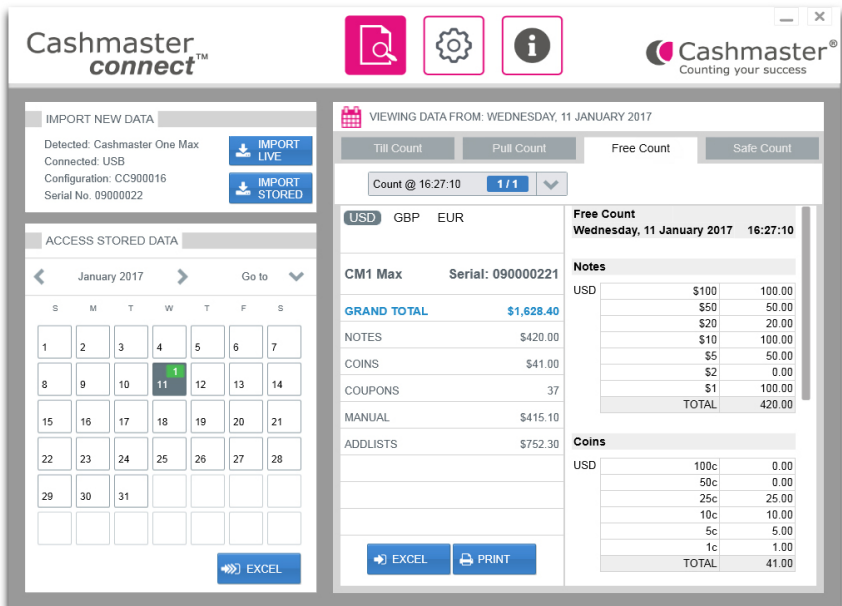
- For older Cashmaster Sigma / Omega counters, click/tap the IMPORT LIVE button in the IMPORT NEW DATA panel within Cashmaster Connect to import your count data into the application.



- 9 Upon successful data import, the application will prompt to clear the count data from your Cashmaster – typically you should choose ‘Yes’ as the application will not allow the import of duplicate count data.



- 10 Your count data will now be displayed within the DATA VIEW panel. From here, you can choose to export the data as a Microsoft® Excel spreadsheet, or print directly to your local printer.



Global support

- **North America**
t: +1 877 227 4627
e: enquiriesusa@cashmaster.com
- **Hong Kong and Asia**
t: +852 2157 9363
e: enquiriesasia@cashmaster.com
- **Germany**
t: +49 (0) 2463 999 339
e: germany@cashmaster.com
- **UK and all other customers**
t: +44 (0) 1383 410 121
e: support@cashmaster.com



cashmaster.com